

Complies with ErP Directive 2009/125/CE and UE Regulation 1253/2014 Residential Ventilation Unit

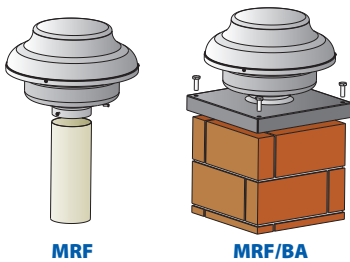


### PERFORMANCE

MODELS	m³/h	l/s	Pa	W	A	dB(A)*
MRF 100 (I)	318	88	415	50	0,22	52
MRF 125 (I)	342	95	395	50	0,22	52
MRF 150 (I)	579	161	459	85	0,37	52
MRF 160 (I)	736	204	515	108	0,47	54
MRF 200 (I)	794	280	503	110	0,48	55
MRF 250 (I)	866	240	602	148	0,65	55
MRF 315 (I)	1222	339	838	247	1,10	55

\* LpA measured at 3m in open field 230V-50Hz  
(1) To comply with the ErP2018 parameters, a local demand controller must be used. See E-VSD pag. 99.

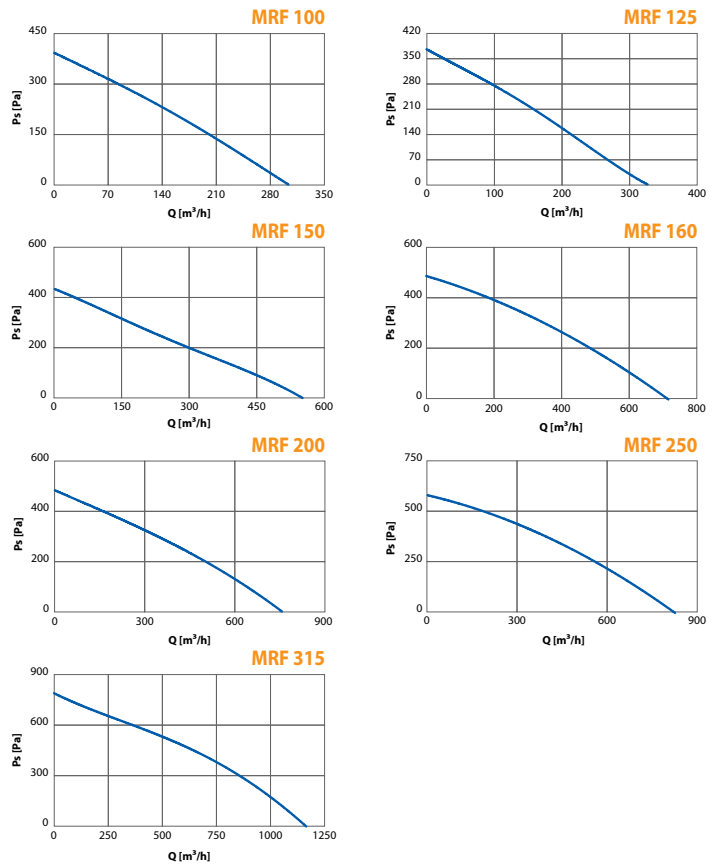
- High performance centrifugal fans for roof installation.
- Compact sizes, available with or without square roof curb.
- Easy and cost-effective solution for a centralized ventilation requirement.
- 7 models Ø100 to 315 mm.
- Made in aluminium and steel sheet with epoxy finish, highly resistant to atmospheric agents.
- Ball bearing motor.
- EC Version available (See pag. 74).



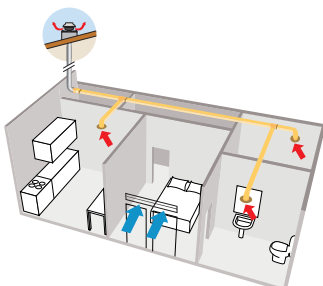
### MODELS

- MRF
- MRF-BA with square roof curb

### CURVES



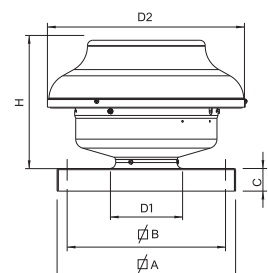
### INSTALLATION

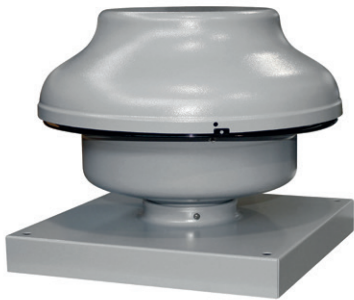


### DIMENSIONS (mm)

MODELS	D1	D2	H	∅ A	∅ B	C	Kg	Kg*
MRF100	98	333	225	300	265	36	3	4,5
MRF125	122	333	225	300	265	36	3	4,5
MRF150	147	405	266	400	360	36	5	7,5
MRF160	157	405	266	400	360	36	5	7,5
MRF200	198	405	266	400	360	36	5	7,5
MRF250	248	405	266	400	360	36	5	7,5
MRF315	314	484	322	400	360	36	8	10

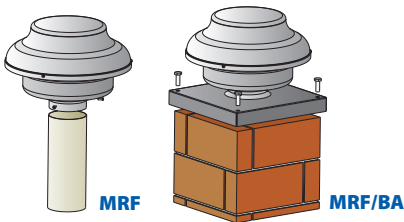
\* Models with square roof curb



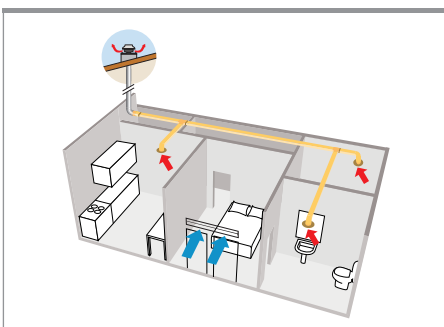


Complies with ErP Directive 2009/125/CE and UE Regulation 1253/2014 Non Residential Ventilation Unit

- High performance and high efficiency centrifugal fans for roof installation
- Easy and cost-effective solution for a centralized ventilation requirement
- Complete range: 7 models available in sizes Ø100 to 315 mm
- Compact sizes
- Available with square roof curb
- Made in aluminium and steel sheet with epoxy finish highly resistant to atmospheric agents.
- Suitable for clean air at max temperature of +60°C
- Ball bearing EC motor and backward curved blades
- Impeller in technopolymer. Statically and dynamically balanced according to ISO1940
- Suitable for continuous running
- Speed controllable



- MRF
- MRF-BA with square roof curb

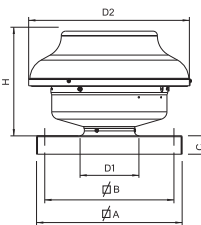


### PERFORMANCE

Model	m³/h	l/s	Pa	W	A	LwA dB(A)*	LpA
MRF 100 EC	395	110	765	78	0,70	77	56
MRF 125 EC	431	120	720	75	0,70	77	56
MRF 150 EC	608	169	518	78	0,70	73	53
MRF 160 EC	682	189	524	85	0,77	72	52
MRF 200 EC	745	207	538	85	0,77	68	48
MRF 250 EC	725	201	495	85	0,77	70	49
MRF 315 EC	1.184	329	607	175	1,50	74	53

\* LWA: sound power according to ISO 3746 / LPA: sound pressure at 3 m in open field (inlet side)

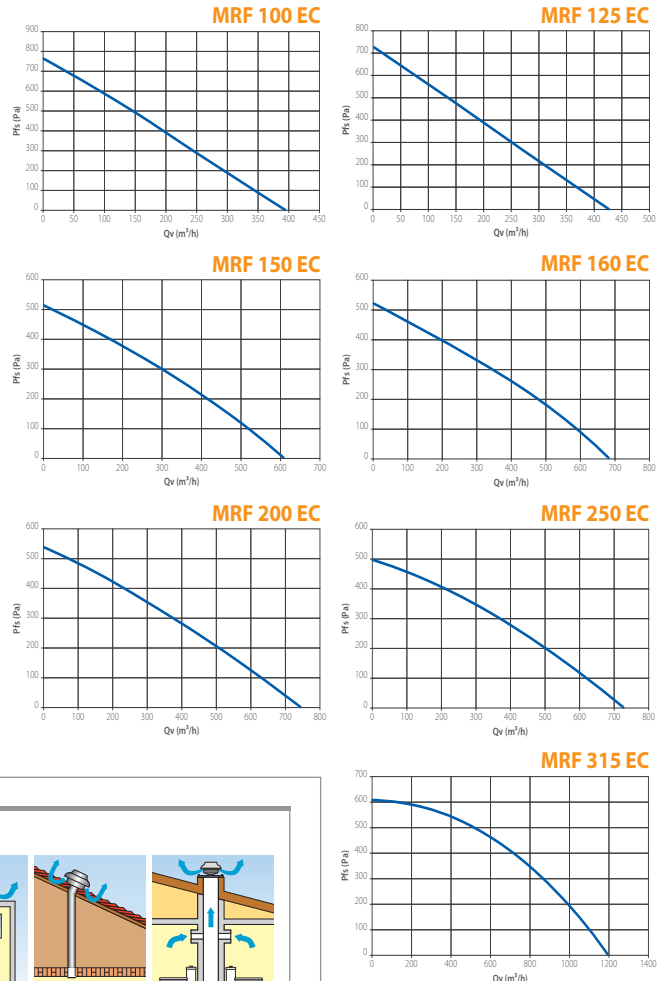
### DIMENSIONS (mm)



MODELS	D1	D2	H	∅A	∅B	C	Kg	Kg*
MRF 100 EC	98	333	225	300	265	36	3,1	4,6
MRF 125 EC	122	333	225	300	265	36	3,1	4,6
MRF 150 EC	147	405	266	400	360	36	4,2	6,2
MRF 160 EC	157	405	266	400	360	36	5	6,2
MRF 200 EC	198	405	266	400	360	36	5,5	6,8
MRF 250 EC	248	405	266	400	360	36	6	7,3
MRF 315 EC	314	484	322	400	360	36	7	10

\* Models with square roof curb

### CURVES



### INSTALLATION

